



SERVICE

SERIES

593

594



INDUSTRY LEADING
COMMERCIAL & INDUSTRIAL SOLUTIONS

Medium-Duty Thermacore® Insulated Steel Door System

SERIES 593 594



Installation and Service: Overhead Door Company of Twin Falls

Standard Features At a Glance

Panel thickness	1 3/8" (35 mm)
R-value	12.76 (2.26 W/Msq)
U-value	.078 (.443 Msq/W)
Thermal break	Hot melt
Air infiltration	
at 15 mph (24 kmph)	.08 cfm (2.26 lpm)
at 25 mph (40 kmph)	.15 cfm (4.25 lpm)
Exterior steel	.016" (.41 mm) galv. (593) .012" (.31 mm) galv. (594)
Exterior surface	(593) Ribbed, textured (594) Raised-panel, textured woodgrain
Standard springs	10,000 cycle
Std. maximum width	20'2" (6,147 mm)
Std. maximum height	16'1" (4,902 mm)
Exterior color	(593) White or Industrial brown (594) White or Chestnut brown
Interior color	White
Warranty	10-year delamination

Options

- Thermal glazing
- High-usage components
- Higher windload package
- Jamb weatherstrip
- Electric operator
- Chain hoist
- Posi-Tension drums
- Safety bottom fixture
- Bottom sensing edge
- EPDM rubber header seal
- Aluminum sash section
- Exhaust ports

Thermal Efficiency, Aesthetic Op

When your project requires a thermal door that is as energy efficient as it is attractive, the Thermacore® 593 and 594 Series are up to the task. These 1 3/8" (35 mm) thick doors provide high levels of thermal protection and are available in standard sizes up to 20'2" wide and 16'1" high (6,417 mm wide and 4,902 mm high). The 593 Series features a ribbed, textured surface, while the 594 Series offers a raised-panel, wood-grain textured exterior surface. Both are fabricated using Overhead Door Corporation's proprietary, computer-controlled manufacturing process. The result is an exceptionally well-built door that adheres to the strictest product tolerances and quality standards – for long-lasting performance and good looks.

Strong, Lightweight, Attractive and Durable.

Thermacore® 593 and 594 doors feature roll-formed, hot-dipped galvanized steel exterior panels. Two coats of baked-on, polyester paint – white on the interior and white or Industrial brown (593), and white or Chestnut brown (594) on the exterior – provide a handsome finish that will last for years. Our 10-year warranty against delamination means that we'll stand behind the quality of our doors at the outset and for the long haul.

Superior Field Serviceability.

Thermacore's® special internal construction allows hinges to be placed anywhere along the panel's length permitting customization on the job site – for fast and precise installation, repair or retrofit.

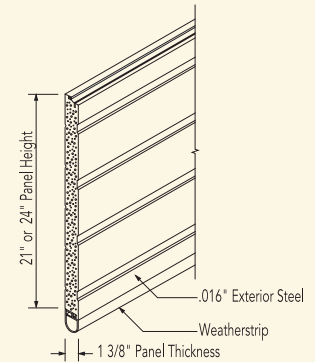
Highly Engineered for High Thermal Efficiency.

Thermacore's® CFC-free, fully encapsulated, foamed-in place panel maintains R-value performance year round — and year in and year out. PVC thermal break and joint seals minimize air infiltration and provides one of the highest thermal efficiency ratings in the industry for its class.

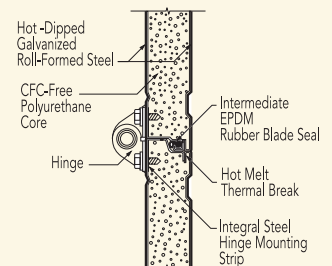




Options, Long-Lasting Performance



Thermacore's® steel-polyurethane-steel sandwich panel construction is lightweight, incredibly strong and exceptionally efficient – reflecting a level of thermal performance that is available only in Overhead Door Corporation's Thermacore® line.



Installation and Service: Overhead Door Company of Glens Falls

Many Options, Better Solutions.

The Thermacore® 593 and 594 are available in sizes up to 20'2" (6,417 mm) wide and 16'1" (4,902 mm) high. A full line of electric operators ensures precise and trouble-free motor operation in a variety of mounting options (side, center or trolley). Available options include aluminum sash sections up to 20'2" (6756 mm), thermal glazing, and jamb weatherstripping. Optional high-usage components expand the door versatility to high-cycle conditions, with torsion springs in 25k, 50k, 75k or 100k cycles, a solid-steel shaft to reduce fatigue and deflection, and a heavy-duty 3" (76 mm) steel track for added durability.

For additional information, or special project requirements, consult your Overhead Door Distributor or the Overhead Door Architectural Design Manual.

PART 1 GENERAL**1.01 Work Included**

The doors will be Thermacore® Series 593 or 594 as manufactured by Overhead Door Corporation.

1.02 Related Work

Opening preparation, miscellaneous or structural metal work, access panels, finish or field painting, field electrical wiring, wire, conduit, fuses and disconnect switches are in the Scope of Work of other divisions or trades.

1.03 Quality Assurance

In accordance with accepted quality assurance guidelines for motor-operated doors, both the Thermacore door and electric operator (optional) shall be manufactured by a single-source producer of door systems; as by Overhead Door Corporation.

PART 2 PRODUCT**2.01 Sections**

Section profile will be ribbed, textured surface (593 Series) or raised panel, woodgrain textured surface (594 Series). Sections will be roll formed, hot-dipped, galvanized steel exterior no less than .016" (.41 mm) for 593 Series, and no less than .012" (.31 mm) for 594 Series. Sections will be manufactured by a continuous foamed-in-place polyurethane lamination process resulting in a metal/foam/metal sandwich of homogenous polyurethane insulation. Sections (Panels) will have a thickness of 1 3/8" (35 mm) and will incorporate a thermal break to prevent heat or cold conductivity.

2.02 Insulation

Insulation will be a rigid, foamed-in-place, polyurethane core free of CFCs and will be fully encapsulated in nonpermeable materials to prevent loss of thermal efficiency over time. The insulation will have an R-value of 12.76 (2.26 W/Msq), U-value of .078 (.443 Msq/W) calculated values based on certified test data.

2.03 Air Infiltration

(ANSI/DASMA 102-1996 standards and as required by code. Consult factory for specific requirements.)

2.04 End Stiles

End stiles will be 20-gauge steel.

2.05 Springs

Standard springs will be 10,000 cycles. (25,000, 50,000, 75,000, or 100,000-cycle springs are optional.)

2.06 Hardware

Hinges and fixtures will be galvanized steel. Full-floating, ball-bearing rollers will have hardened steel races. Roller sizes will be adequate for design requirements and limitations.

2.07 Track

Track is 2" (51 mm) standard or (3" (76 mm) optional) and angle mounted. (Bracket-mounted track is an option, but not available on full vertical doors.)

2.08 Lock

Lock will be interior mounted slide lock.

2.09 Weatherstrip

Weatherstrip between sections will be EPDM rubber blade seals fitted inside every joint. Bottom weatherstrip will be EPDM rubber bulb-type strip.

2.10 Finish

Finish will be two-coat baked-on polyester with a white interior, and white or Industrial brown exterior for 593 series and Chestnut brown for 594 series.

2.11 Operation

Operation will be by manual pull rope. (Optional chain hoist and electric operator are available.)

PART 3 EXECUTION**3.01 Execution**

Install the doors in accordance with Overhead Door Corporation instructions and standards, using an authorized Overhead Door Corporation distributor.

THE TURNKEY SOURCE FOR COMMERCIAL AND INDUSTRIAL SOLUTIONS AND SERVICE

Selection of Overhead Door products automatically includes the unequaled expertise and experience of Overhead Door Ribbon Distributors. Nationwide coverage by our 400+ Ribbon Distributors is unique in our industry – providing a single source for design and application consulting, installation, service and ongoing maintenance. Turnkey services to maximize the lasting value of your product choice. Your Overhead Door Distributor is also your only source for a full line of commercial and industrial door and operator systems specifically designed for integrated applications. For over four generations, our 400+ Ribbon Distributors have been committed to providing commercial and industrial door solutions. Combined with Overhead Door product design and manufacturing superiority, our distributors are a proud part of the Overhead Door family, sharing our name, our Ribbon logo and our commitment to industry leading innovation and excellence.

To talk with the Overhead Door Distributor nearest you, call 1-800-887-DOOR.

Overhead Door Corporation

2501 S. State Hwy. 121
Lewisville, Texas 75067
(800) 275-3290 Telephone
www.OverheadDoor.com



**INDUSTRY LEADING
COMMERCIAL & INDUSTRIAL SOLUTIONS**