

# Aluminum Door Systems



Product Line

SERIES

511 521



INDUSTRY LEADING  
COMMERCIAL & INDUSTRIAL SOLUTIONS

# An Attractive Solution for Maximum Visual Access and Light Infiltration

## THE TURNKEY SOURCE FOR COMMERCIAL AND INDUSTRIAL SOLUTIONS AND SERVICE

Selection of Overhead Door products automatically includes the unequalled expertise and experience of Overhead Door Ribbon Distributors. Nationwide coverage by our 400+ Ribbon Distributors is unique in our industry—providing a single source for design and application consulting, installation, service and ongoing maintenance. Turnkey services to maximize the lasting value of your product choice. Your Overhead Door Distributor is also your only source for a full line of commercial and industrial door and operator systems specifically designed for integrated applications. For over four generations, our 400+ Ribbon Distributors have been committed to providing commercial and industrial door solutions. Combined with Overhead Door product design and manufacturing superiority, our distributors are a proud part of the Overhead Door family, sharing our name, our Ribbon logo and our commitment to industry leading innovation and excellence.



### GENERAL FEATURES AND BENEFITS

#### Durable Construction for Years of Reliable Operation

- 1 3/4" (45 mm) thick, corrosion-resistant 6063-T6 aluminum sections with galvanized fixtures and hinges promotes durability and trouble-free operation
- 1/4" (6 mm) diameter through-rods on all stiles and rails enhances strength and sturdiness
- Top-quality materials, excellent field service and optional maintenance program contribute to extended door life, low maintenance costs and maximum productivity

#### A Variety of Standard Features and Options

- Doors up to 26'2" (7976 mm) wide and 20'1" (6121 mm) high
- Glazing choices include DSB glass, plexiglas, tempered glass, clear lexan, and wire glass
- Standard clear anodized finish for low-maintenance and corrosion-resistance
- Optional finishes include bronze anodization or a variety of standard powder-coat paint colors
- Manual pull rope operation with optional chain hoist or electric motor operator

Aluminum		GENERAL SPECIFICATIONS																
	SERIES	Panel thickness	Max. width	Max. height	Rails Standard Material	Rails Standard finish	Stile widths Center	Stile widths End	Rail widths Top	Rail widths Intermediate (Combined)	Rail widths Bottom							
Sectional (Pg. 2-3)	<b>511</b>	1 3/4" (45 mm)	20'2" (6147 mm)	16'1" (4902 mm)	6063-T6 aluminum	204R-1 clear anodized	.661" (16 mm)	2 3/4" (70 mm)	2 3/8"/3 3/4" (60 mm/95 mm)	1 3/8" (40 mm)	3 3/4"/4 1/2" (95 mm/114 mm)							
Sectional (Pg. 4-5)	<b>521</b>	1 3/4" (45 mm)	26'2" (7976 mm)	20'1" (6121 mm)	6063-T6 aluminum	204R-1 clear anodized	2.712" (68 mm)	3.35" (85 mm)	2 3/8"/3 3/4" (60 mm/95 mm)	3 23/32" (94 mm)	3 3/4"/4 1/2" (95 mm/114 mm)							
	SERIES	AVAILABLE OPTIONS																
Sectional (Pg. 2-3)	<b>511</b>	1/8" (3 mm) DSB	1/8" (3 mm) or 1/4" (6 mm) plexiglas	1/8" (3 mm) or 1/4" (6 mm) tempered	1/8" (3 mm) or 1/4" (6 mm) clear lexan	1/4" (6 mm) wire glass	1/2" (12 mm) insulated glass	Electric operator	Bottom sensing edge	Chain hoist	3" track	Bracket mounting	High-cycle springs	Posi-Tension drums	Pass door	Exhaust ports	Bronze anodization	Powder-coat paint finish
Sectional (Pg. 4-5)	<b>521</b>	●	●	●	●	●	●	●	●	●	●	●	●	●	●	●	●	●

Information is subject to change. Please call your local Overhead Door distributor for special applications or if your application is not listed.



Overhead Door Corporation's aluminum sectional doors offer an attractive solution for commercial and industrial applications where visual access, light infiltration and aesthetics are key design considerations. Offered with a variety of stile widths, glazing materials, track styles, and finish options — and in sizes up to 26'2" (7976 mm) wide and 20'1" (6121 mm) high — these doors feature 1 3/4"(45 mm) sections and 1/4" (6 mm) diameter through-rods for strength and stability. A clear-anodized 204R-1 standard finish affords corrosion resistance, and bronze anodization and a spectrum of powder-coating paint finishes are additionally available. Ideal for service stations, fire stations, professional facilities and retail environments, our sectional aluminum doors are practical, durable and handsomely styled — and engineered for long life, low maintenance and enduring beauty.

*Installation and Service: Overhead Door Company of Southwestern Idaho*



# Sectional Aluminum Doors

## SERIES 511

### Standard Features At a Glance

Panel thickness	1 3/4" (45 mm)
Maximum standard width	16'2" (6147 mm)
Maximum standard height	16'1" (4902 mm)
Material	6063-T6 aluminum
Standard finish	204R-1 clear anodized
Center stile width	.661" (16 mm)
End stile width	2 3/4" (70 mm)
Top rail width	2 3/8" (60 mm) or 3 3/4" (95 mm)
Top intermediate rail width	1 5/16" (24 mm)
Bottom intermediate rail width	7/16" (11 mm)
Bottom rail width	2 3/4" (70 mm) or 3 3/4" (95 mm) or 4 1/2" (114 mm)
Weatherseals	Bottom, flexible PVC
Standard springs	10,000 cycle
Track	2" (51 mm)
Mounting	Angle
Operation	Manual pull rope
Hinges and fixtures	Galvanized steel
Lock	Galvanized, interior-mounted single unit

### 197 Standard Powder Coat Finishes



The Color Palette for Rolling Steel Products specifying all 197 powder coat finishes is available from your Overhead Door distributor.

### Options

- Glazing options\*: 1/8" (3 mm) DSB; 1/8" (3 mm) or 1/4" (6 mm) plexiglas; 1/8" (3 mm) or 1/4" (6 mm) tempered; 1/8" (3 mm) or 1/4" (6 mm) clear lexan; 1/4" (6 mm) wire glass; 1/2" (12 mm) insulated glass
- Electric operator or chain hoist
- Bottom sensing edge
- 3" track
- Bracket mounting (not available on full vertical door tracks)
- Higher-cycle springs in 25k, 50k, 75k, 100k cycles
- Exhaust ports
- 197 standard powder or color matched to architect specifications

\*Contact your local Overhead Door Corporation Ribbon distributor for special glazing requirements. Verify 1/4" (6 mm) glass applications with factory

The 511 Series doors are designed in sizes up to 16'2" wide and 16'1" high (6147 mm and 4902 mm). Featuring a narrow center stile width of 5/8" (16 mm), these doors are sleek, attractive and permit maximum visibility. An array of glazing choices, top- and bottom-rail widths, finishes and special options customizes the 511 Series to satisfy nearly any project requirement.

### ARCHITECTURAL SPECIFICATIONS\*

511

#### PART 1 GENERAL

##### 1.01 Work Included

The doors will be 511 Series as manufactured by Overhead Door Corporation.

##### 1.02 Related Work

Opening preparation, miscellaneous or structural metal work, access panels, finish or field painting, field electrical wiring, wire, conduit, fuses and disconnect switches are in the Scope of Work of other divisions or trades.

##### 1.03 Quality Assurance

In accordance with accepted quality assurance guidelines for motor-operated doors, both the door and electric operator (optional) shall be manufactured by a single-source producer of door systems; as by Overhead Door Corporation.

#### PART 2 PRODUCT

##### 2.01 Sections

Section will be comprised of 204R-1 clear (bronze or powder coated optional) rails and stiles extruded from 6063-T6 aluminum to produce a door panel thickness of 1-3/4" (45 mm). Center stiles will be .661" (16 mm). End stiles will be 2-3/4" (70 mm). Top rails will be 2-3/8" (60 mm) or 3-3/4" (95 mm). Bottom rails will be 2-3/4" (70 mm) or 3-3/4" (95 mm) or 4-1/2" (114 mm). All stiles and rails will be secured with 1/4" (6 mm) diameter through-rods. Panels will be anodized .050" (1 mm) aluminum held in place with aluminum moulding.

##### 2.02 Glazing

Glazing will be (1/8" (3 mm) DSB), (1/8" (3 mm) or (1/4" (6 mm) plexiglas), (1/8" (3 mm) or 1/4" (6 mm) tempered), (1/8" (3 mm) or 1/4" (6 mm) clear lexan), (1/4" (6 mm) wire glass), (1/2" (12 mm) insulated glass.) Verify 1/4" (6 mm) and 1/2" (12 mm) special glazing requirements with factory.



**2.03 Springs**

Standard springs will be 10,000 cycles. (Higher-cycle 25,000, 50,000, 75,000, or 100,000 cycle springs).

**2.04 Hardware**

Hinges and fixtures will be galvanized steel. Full-floating ball-bearing rollers will have hardened steel races. Roller sizes will be adequate for design requirements and limitations.

**2.05 Track**

Track is 2" (51 mm) standard (3" (76 mm) optional) angle mounted. (Bracket-mounted track is an option, but not available on full vertical doors).

**2.06 Lock**

Lock will be interior-mounted galvanized single unit inside mechanism, installed for right-hand (left-hand) operation.

**2.07 Weatherstrip**

Bottom weatherstrip will be flexible PVC.

**2.08 Finish**

Finish will be clear anodized. (Optional bronze anodized) (Optional powder coat paint selected from manufacturer's colors).

**2.09 Operation**

Operation will be by manual pull rope. (Optional chain hoist and electric operator are available.)

**PART 3 EXECUTION**

**3.01 Execution**

Install the doors in accordance with Overhead Door Corporation instructions and standards, using an authorized Overhead Door Corporation distributor.

*\*Note to specifier: This specification is a suggested guide. Available options are shown in parentheses.*

Panel Schedule		Section Schedule	
Door Width	Number of Panels	Door Height	Number of Sections
to 8'11" (2718 mm)	2	to 8'6" (2591 mm)	4
9'0" to 11'11" (2743 mm to 3632 mm)	3	8'7" to 10'1" (2616 mm to 3073 mm)	5
12'0" to 14'11" (3658 mm to 4547 mm)	4	10'2" to 12'1" (3099 mm to 3683 mm)	6
15'0" to 17'11" (4572 mm to 5461 mm)	5	12'2" to 14'1" (3708 mm to 4293 mm)	7
18'0" to 20'2" (5486 mm to 6147 mm)	6*	14'2" to 16'1" (4318 mm to 4902 mm)	8

\*Special construction. Consult your local Overhead Door Ribbon distributor for additional information.

Installation and Service: Overhead Door Company of Atlanta



### Standard Features At a Glance

Section thickness	1 3/4" (45 mm)
Maximum standard width	26'2" (7976 mm)
Maximum standard height	20'1" (6121 mm)
Material	6063-T6 aluminum
Standard finish	204R-1 clear anodized (painted white at no charge)
Center stile width	2.712" (69 mm)
End stile width	3.350" (85 mm)
Top rail width	2 3/8" (60 mm) or 3 3/4" (95 mm)
Top intermediate rail width	2 1/8" (54 mm)
Bottom intermediate rail width	1 19/32" (40 mm)
Bottom rail width	3 3/4" (95 mm) or 4 1/2" (114 mm)
Weatherseals	Bottom, flexible PVC
Standard springs	10,000 cycle
Track	2" (51 mm)
Mounting	Angle
Operation	Manual pull rope
Hinges and fixtures	Galvanized steel
Lock	Galvanized, interior-mounted single unit

### 197 Standard Powder Coat Finishes



The Color Palette for Rolling Steel Products specifying all 197 powder coat finishes is available from your Overhead Door distributor.

### Options

- Glazing options\*: 1/8" (3 mm) DSB; 1/8" (3 mm) or 1/4" (6 mm) plexiglas; 1/8" (3 mm) or 1/4" (6 mm) tempered; 1/8" (3 mm) or 1/4" (6 mm) clear lexan; 1/4" (6 mm) wire glass, 1/2" (12mm) insulated glass
- Electric operator or chain hoist
- Bottom sensing edge
- 3" track
- Bracket mounting (not available on full vertical door tracks)
- Higher-cycle springs in 25k, 50k, 75k, 100k cycles
- Exhaust ports
- 197 standard powder or color matched to architect specifications
- Four-section pass door

\*Contact your local Overhead Door Corporation Ribbon distributor for special glazing requirements. Verify 1/4" (6 mm) glass applications with factory

The 521 Series is a sectional aluminum door appropriate for environments where maximum light infiltration and/or visual access is required. Designed to fit openings up to 26'2" (7976 mm) wide and 20'1" (6121 mm) high, the 521 Series features a wide, 2 3/4" (70 mm) center stile, a 2 3/8" (60 mm) or 3 3/4" (95 mm) top rail, and 3 3/4" (95 mm) or 4 1/2" (114 mm) bottom rail. Like the 511 Series, the 521 Series is available with a variety of glazing choices, finishes and special options.

### ARCHITECTURAL SPECIFICATIONS\* 521

#### PART 1 GENERAL

##### 1.01 Work Included

The doors will be 521 Series as manufactured by Overhead Door Corporation.

##### 1.02 Related Work

Opening preparation, miscellaneous or structural metal work, access panels, finish or field painting, field electrical wiring, wire, conduit, fuses and disconnect switches are in the Scope of Work of other divisions or trades.

##### 1.03 Quality Assurance

In accordance with accepted quality assurance guidelines for motor-operated doors, both the door and electric operator (optional) shall be manufactured by a single-source producer of door systems; as by Overhead Door Corporation.

#### PART 2 PRODUCT

##### 2.01 Sections

Section will be comprised of 204R-1 clear (bronze, painted white or powder coat) rails and stiles extruded from 6063-T6 aluminum to produce a door panel thickness of 1 3/4" (45 mm). Center stiles will be 2.712" (69 mm). End stiles will be 3.35" (85 mm). Top rails will be 2 3/8" (60 mm) or 3 3/4" (95 mm). Intermediate rails will be 3 23/32" (94 mm). Bottom rails will be 3 3/4" (95 mm) or 4 1/2" (114 mm). All stiles and rails will be secured with 1/4" (6 mm) diameter through-rods. Panels will be anodized .050" (1 mm) aluminum held in place with aluminum moulding.

##### 2.02 Glazing

Glazing will be (1/8" (3 mm) DSB) (1/8" (3 mm) or 1/4" (6 mm) plexiglas), (1/8" (3 mm) or 1/4" (6 mm)



tempered), (1/8" (3 mm) or (1/4" (6 mm) clear lexan), (1/4" (6 mm) wire glass), (1/2" (12 mm) insulated glass. Verify 1/4" (6 mm) and 1/2" (12mm) special glazing requirements with factory.

**2.03 Springs**

Standard springs will be 10,000 cycles. (Higher-cycle 25,000, 50,000, 75,000, or 100,000 cycle springs).

**2.04 Hardware**

Hinges and fixtures will be galvanized steel. Full-floating ball-bearing rollers will have hardened steel races. Roller sizes will be adequate for design requirements and limitations.

**2.05 Track**

Track is 2" (51 mm) standard (3" (76 mm) optional) angle mounted. (Bracket-mounted track is an option, but not available on full vertical doors).

**2.06 Lock**

Lock will be interior-mounted galvanized single unit inside mechanism, installed for right-hand (left-hand) operation.

**2.07 Weatherstrip**

Bottom weatherstrip will be flexible PVC.

**2.08 Finish**

Finish will be clear anodized. (Optional bronze anodized) (Optional powder coat paint selected from manufacturer's colors).

**2.09 Operation**

Operation will be by manual pull rope. (Optional chain hoist and electric operator are available.)

**PART 3 EXECUTION**

**3.01 Execution**

Install the doors in accordance with Overhead Door Corporation instructions and standards, using an authorized Overhead Door Corporation distributor.

*\*Note to specifier: This specification is a suggested guide. Available options are shown in parentheses.*

Panel Schedule		Section Schedule	
Door Width	Number of Panels	Door Height	Number of Sections
to 8'11" (to 2675 mm)	2	to 8'6" (to 2591 mm)	4
9'0" to 11'11" (2700 mm to 3632 mm)	3	8'7" to 10'1" (2616 mm to 3073 mm)	5
12'0" to 14'11" (3658 mm to 4547 mm)	4	10'2" to 12'1" (3099 mm to 3683 mm)	6
15'0" to 17'11" (4572 mm to 5461 mm)	5	12'2" to 14'1" (3708 mm to 4293 mm)	7
18'0" to 20'11" (5486 mm to 6375 mm)	6*	14'2" to 16'1" (4318 mm to 4902 mm)	8
21'0" to 23'11" (6401 mm to 7290 mm)	8*	16'2" to 18'1" (4928 mm to 5512 mm)	9
24'0" to 26'2" (7315 mm to 7976 mm)	10*	18'2" to 20'1" (5537 mm to 6121 mm)	10

\*Special construction. Consult your local Overhead Door Ribbon distributor for additional information.

Installation and Service: Overhead Door Company of Twin Falls

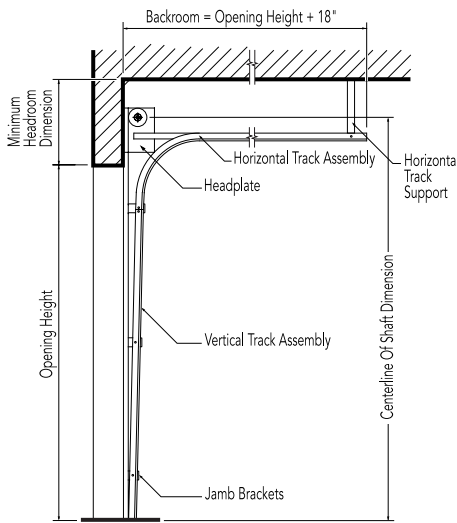


# Track Detail

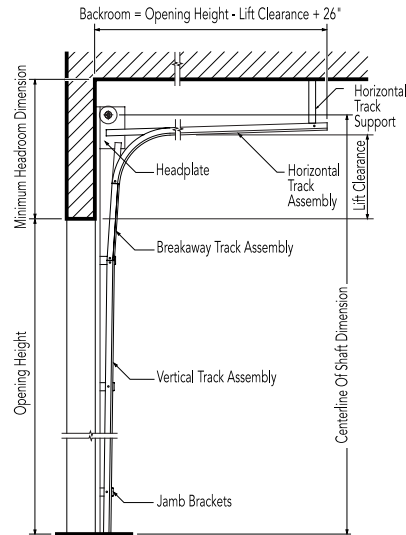
Any of the following track configurations can be selected for 511 and 521 Aluminum door models.

O.H.=Opening Height L.C.=Lift Clearance D.H.=Door Height

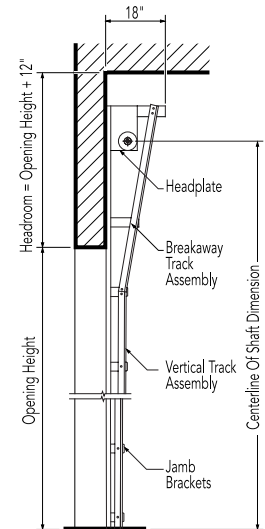
## Standard Lift Track



## Lift Clearance Track Standard



## Full Vertical Track

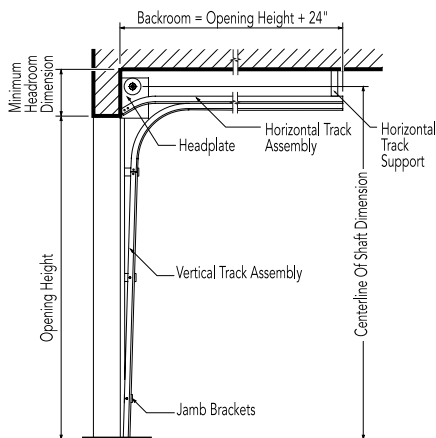


2" (51 mm) Track [15" (381 mm) Radius]		
Door Height	Centerline of Shaft	Minimum Headroom
Thru 12'0" (3658 mm)	O.H. + 11 5/8" (295 mm)	14 1/4" (362 mm)
Thru 16'0" (4877 mm)	O.H. + 12 5/8" (321 mm)	20 1/2" (521 mm)
3" (76 mm) Track [15" (381 mm) Radius]		
Thru 18'0" (5486 mm)	O.H. + 14 5/8" (372 mm)	18" (457 mm)
Thru 32'0" (9754 mm)	O.H. + 16 7/8" (429 mm)	21 1/2" (546 mm)

2" (51 mm) Track [15" (381 mm) Radius]		
Door Height	Centerline of Shaft	Minimum Headroom
Thru 12'0" (3658 mm)	O.H.+L.C.+5 5/8" (143 mm)	L.C.+ 8 3/4" (222 mm)
Thru 16'0" (4877 mm)	O.H.+L.C.+5 5/8" (143 mm)	L.C.+11 1/4" (286 mm)
3" (76 mm) Track [15" (381 mm) Radius]		
Thru 22'0" (6706 mm)	O.H.+L.C.+6 5/8" (168 mm)	L.C.+11 1/2" (292 mm)
Thru 32'0" (9754 mm)	O.H.+L.C.+6 5/8" (168 mm)	L.C.+12 1/4" (311 mm)

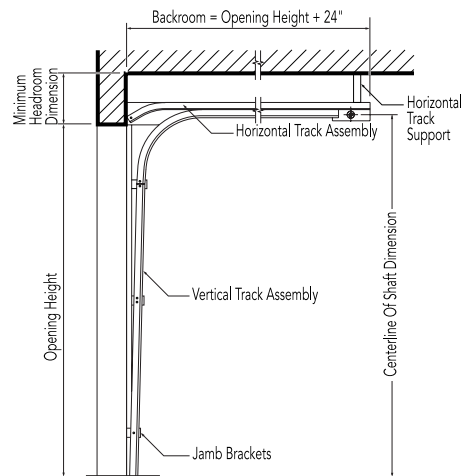
2" (51 mm) Track [15" (381 mm) Radius]		
Door Height	Centerline of Shaft	Minimum Headroom
Thru 11'0" (3353 mm)	O.H.+O.H.+3/8" (10 mm)	O.H.+10 1/4" (260 mm)
Thru 16'0" (4877 mm)	O.H.+O.H.+3/8" (10 mm)	O.H.+10 1/4" (260 mm)
3" (76 mm) Track [15" (381 mm) Radius]		
Thru 18'0" (5486 mm)	O.H.+O.H.+3/8" (10 mm)	O.H.+10 1/4" (260 mm)

## Low Headroom Track Springs to Front



2" (51 mm) Track [15" (381 mm) Radius]		
Door Height	Centerline of Shaft	Minimum Headroom
Thru 12'0" (3658 mm)	D.H. + 8" (203 mm)	11 3/4" (299 mm)
Thru 16'0" (4877 mm)	D.H. + 8" (203 mm)	12 1/2" (318 mm)
3" (76 mm) Track [15" (381 mm) Radius]		
Thru 12'0" (3658 mm)	D.H. + 9" (229 mm)	13" (330 mm)
Thru 18'0" (5486 mm)	D.H. + 9" (229 mm)	13 3/4" (349 mm)

## Low Headroom Track Springs to Rear



2" (51 mm) Track [15" (381 mm) Radius]		
Door Height	Centerline of Shaft	Minimum Headroom
Thru 12'0" (3658 mm)	O.H. + 2" (51 mm)	7 1/2" (191 mm)
Thru 16'0" (4866 mm)	O.H. + 2" (51 mm)	8" (203 mm)
3" (76 mm) Track [15" (381 mm) Radius]		
Thru 18'0" (5486 mm)	O.H.+6 3/4" (171 mm)	9 3/4" (248 mm)

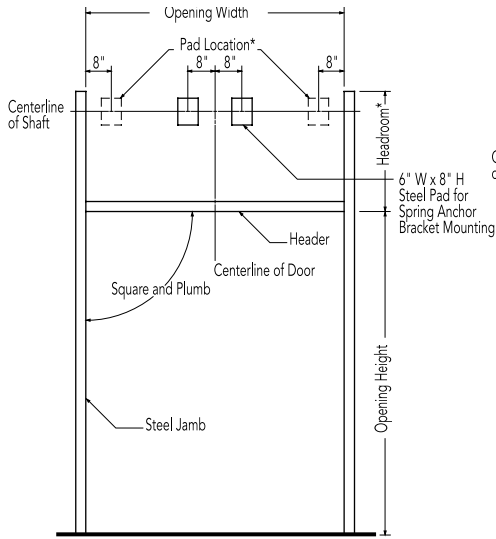
Additional headroom required for drawbar operation. Consult your local Overhead Door Distributor.



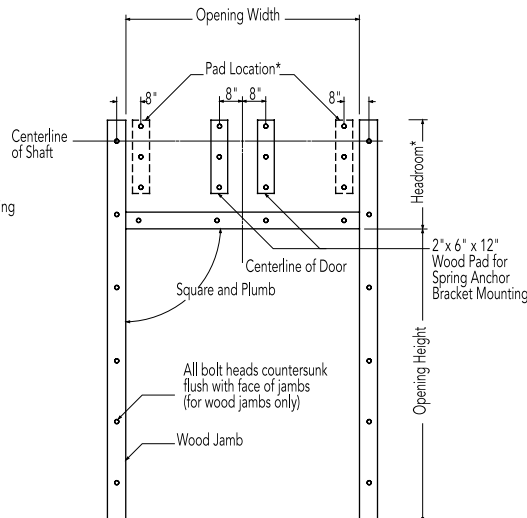


Framing and pad details for common installation of Aluminum doors in steel, wood, concrete and masonry jambs are provided here. If you require additional information or have special project requirements, refer to the Overhead Door Architectural Design Manual, or consult with the Overhead Door Applications Engineering Group or your local Overhead Door Distributor.

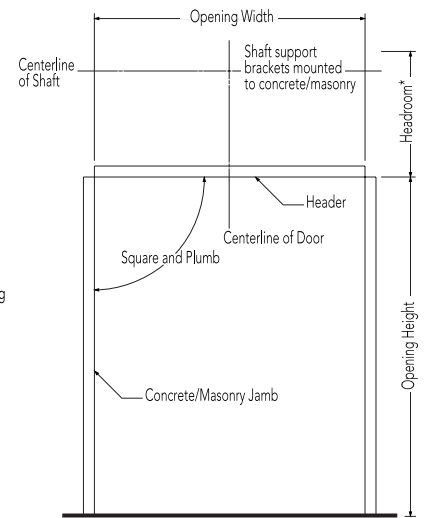
<b>Steel Jambs</b>	<b>Wood Jambs</b>	<b>Concrete/Masonry Jambs</b>
--------------------	-------------------	-------------------------------



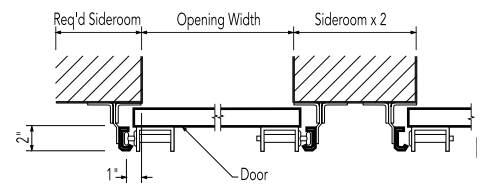
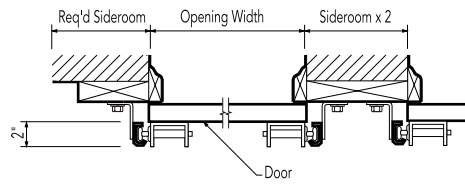
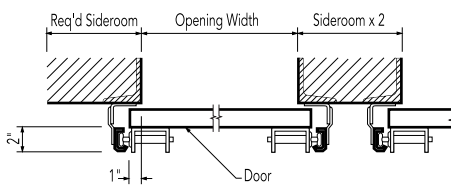
\* Pad Location for additional shaft support brackets for doors over 18'3" wide



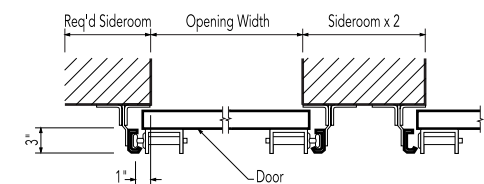
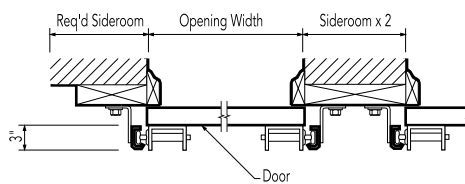
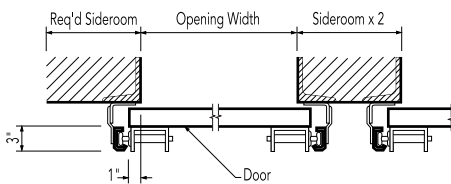
\* Pad Location for additional shaft support brackets for doors over 18'3" wide



<b>2" (51 mm) Track</b>	<b>2" (51 mm) Track</b>	<b>2" (51 mm) Track</b>
-------------------------	-------------------------	-------------------------



<b>3" (76 mm) Track</b>	<b>3" (76 mm) Track</b>	<b>3" (76 mm) Track</b>
-------------------------	-------------------------	-------------------------



Minimum Required Sideroom		
rack Type	2" Track (51 mm)	3" Track (76 mm)
Standard Lift	4 1/2" (114 mm)	6 1/2" (165 mm)
Low Headroom	9" (229 mm)	10" (254 mm)
Lift Clearance	4 1/2" (114 mm)	6 1/2" (165 mm)
Full Vertical	4 1/2" (114 mm)	6 1/2" (165 mm)

Minimum Required Sideroom		
Track Type	2" Track (51 mm)	3" Track (76 mm)
Standard Lift	3 1/2" (89 mm)	5 1/2" (140 mm)
Low Headroom	8" (203 mm)	9" (229 mm)
Lift Clearance	3 1/2" (89 mm)	5 1/2" (140 mm)
Full Vertical	3 1/2" (89 mm)	5 1/2" (140 mm)

Minimum Required Sideroom		
Track Type	2" Track (51 mm)	3" Track (76 mm)
Standard Lift	4 1/2" (114 mm)	6 1/2" (165 mm)
Low Headroom	9" (229 mm)	10" (254 mm)
Lift Clearance	4 1/2" (114 mm)	5 1/2" (140 mm)
Full Vertical	4 1/2" (114 mm)	5 1/2" (140 mm)

## Operator Control Options

- Push-button, key or combination stations; surface- or flush-mounted for interior and/or exterior locations
- Vehicle detectors, key card reader, photocell and door timer controls
- Treadle or pull switch stations
- Telephone entry and coded keyboard stations
- Universal programmable door timer
- Commercial light package
- Radio control systems (24 VAC or 120 VAC )
- Explosion and dust ignition-proof systems

## Electric Operator Selection Guide

	Horsepower	Max. height of door	Max. weight of door	V-belt	6-rib poly J-belt	Worm gear	Planetary Gears	Adjustable clutch	Totally enclosed	Continuous duty	Explosion proof	Mounting type
<b>ArmorDrive</b>	1/2, 1 HP	32' (9753 mm)	3000 (1360 kg)				•			•		T,S,C
<b>Model SDB+</b>	1, 2 HP	28' (8534 mm)	3080 (1397 kg)			•		•	•	•	•	S,C
<b>Model L+</b>	1/3, 1/2, 3/4 HP	28' (8534 mm)	1650 (748 kg)			•		•	•	•	•	T,S,C
<b>Model JST+</b>	1/3, 1/2, 3/4 HP	24' (7315 mm)	1450 (657 kg)		•			•	•	•		T,S,C
<b>Model SEL+</b>	1/3,1/2 HP	18' (5486 mm)	940 (426 kg)	•						•		T,S
<b>Model MD</b>	1/2 HP	14' (4267mm)	620 (281 kg)	•								T,S

Mounting Options: T = Trolley S = Side mount C = Center mount

## Entrapment Protection

The installation of an external reversing device for all electrically operated commercial doors is recommended. If a sensing edge or other reversing device is not installed, a constant-contact control switch must be used to close the door. We recommend a four-wire, fail-safe electric sensing edge that will not allow the door to close if the sensing edge is damaged or not working properly.

## NEW Operator Model

### ArmorDrive™

The ArmorDrive comes available with a 1/2 hp or 1 hp motor. This full-featured, modular door control system lifts every door in our commercial and industrial lines – from sectional doors and security grilles to the largest rolling steel service door. Customized mounting kits accommodate your specific door type, configuration and installation scenario.



Overhead Door Corporation offers the broadest line of electric operators to suit new construction and retrofit applications, as well as unusual or special requirements. Manufactured by Overhead Door Corporation to meet the exacting performance requirements of Overhead Door's upward-acting doors, our ribbon branded operators afford precise control of door action for years of trouble-free operation.

In order to improve safety and enhance door and motor life, industry quality assurance guidelines recommend the choice of a single manufacturer for both door and operator applications. Overhead Door Corporation is the only national manufacturer of a full line of commercial and industrial doors and operators specifically designed for integral applications.

## Operator Models

### Model SDB+

Model SDB+ is a heavy-duty commercial operator designed to operate doors up to 28' (8534 mm) in height and 3080 pounds (1399 kg). It is available as either a side-mounted or center-mounted unit.



### Model L+

Model L+ is a heavy-duty commercial operator designed to operate doors up to 28' (8534 mm) in height and 1650 pounds (748 kg). It is available as a trolley-type (20:1 gear ratio), or side-mounted or center-mounted unit (40:1 gear ratios).



### Model JST+

Model JST+ is a standard-duty operator designed to operate doors up to 24' (7315 mm) in height and 1450 pounds (658 kg). It is available as a trolley-type, side-mounted, or center-mounted unit.





**Model SEL+**

Model SEL+ is a standard-duty operator designed to operate doors up to 18' (5486 mm) in height and 940 pounds (426 kg). It is available as a trolley-type or side-mounted unit.



**Model MD**

Model MD is a limited-duty operator designed to operate doors up to 14' (4267 mm) in height and 620 pounds (281 kg). It includes an internal electronic reversing system that will reverse a closing door upon detection of an obstruction. It is available as a trolley-type or side-mounted unit.



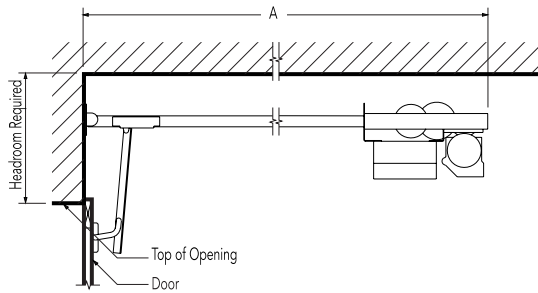
**Mounting Details**

**Trolley-type (Drawbar)** operators feature a power unit mounted between, above and to the rear of the horizontal tracks. The drawbar drive provides positive control of the door at all times, making this operator the preferred choice whenever possible. Maximum door width is 20' per drawbar. Available on Models JST+, SEL+, L+, MD, and ArmorDrive.

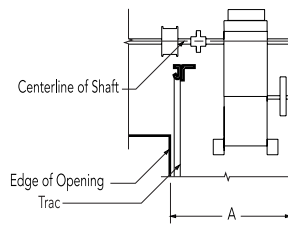
**Side-mounted (jackshaft)** operators feature a power unit mounted on the inside front wall and connected to the crosshead shaft, with an adjustable coupling or drive chain and sprockets. Available on models MD, SEL+, JST+, SDB+, L+, and ArmorDrive.

**Center-mounted (jackshaft)** operators feature a power unit on the front wall above the door opening. No additional backroom is required. Available on models JST+, L+, SDB+ and ArmorDrive.

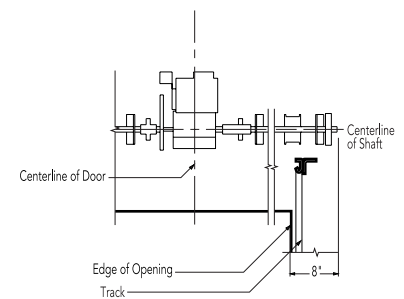
**Trolley-type (Drawbar)  
JST+, SEL+, L+, MD, ArmorDrive**



**Side Mount Type  
MD, SEL+, JST+, SDB+, L+,  
ArmorDrive**



**Center Mount/Jackshaft Type  
JST+, L+, SDB+, ArmorDrive**



Minimum Required Sideroom		
Track Type	2" Track (51 mm)	3" Track (76 mm)*
Standard Lift	4 1/2" (114 mm)	6 1/2" (165 mm)
Low Headroom	9" (229 mm)	10" (254 mm)
Lift Clearance	4 1/2" (114 mm)	6 1/2" (165 mm)
Full Vertical	4 1/2" (114 mm)	6 1/2" (165 mm)

Minimum Required Sideroom		
Track Type	2" Track (51 mm)	3" Track (76 mm)*
Standard Lift	3 1/2" (89 mm)	5 1/2" (140 mm)
Low Headroom	8" (203 mm)	9" (229 mm)
Lift Clearance	3 1/2" (89 mm)	5 1/2" (140 mm)
Full Vertical	3 1/2" (89 mm)	5 1/2" (140 mm)

Minimum Required Sideroom		
Track Type	2" Track (51 mm)	3" Track (76 mm)*
Standard Lift	4 1/2" (114 mm)	6 1/2" (165 mm)
Low Headroom	9" (229 mm)	10" (254 mm)
Lift Clearance	4 1/2" (114 mm)	5 1/2" (140 mm)
Full Vertical	4 1/2" (114 mm)	5 1/2" (140 mm)

---

## The Original, Innovative Choice for Unequaled Quality and Service

---

Overhead Door Corporation pioneered the upward-acting door industry, inventing the first upward-acting door in 1921 and the first electric door operator in 1926. Today, we continue to be the industry leader through the strength of our product innovation, superior craftsmanship and outstanding customer support, underscoring a legacy of quality, expertise and integrity. That's why design and construction professionals specify Overhead Door Corporation products more often than any other brand.

The red Overhead Door Ribbon is a mark of quality that also reflects the pride we take in the people who support our products. Our family of 400 Ribbon distributors across the country not only share our name and logo, but also our commitment to excellence. Your Ribbon distributor will work with you in a consultative role to ensure that product selections achieve your design and application requirements — in addition to providing expert installation, professional field service and ongoing maintenance. From project design and manufacturing to installation and service, the Overhead Door Ribbon is your guarantee of genuine quality and turnkey service excellence.

**Together with our Ribbon distributors, we offer comprehensive technical information and resource materials to support your project, including:**

- Architectural Design Manual – a comprehensive guide to selecting, specifying and detailing all commercial and industrial Overhead Door products
- Sweet's Catalog for selection information about our products, and Sweet's CD and CD-CAD for convenient electronic product information, technical specifications, and details with CAD "cut-and-paste" capability
- Operation & Maintenance Manual – detailed product information, customized for your project, to ensure reliable, long-life door system operation
- Custom design and technical assistance through our Corporate Application Engineering Teams



JetRoll® High Speed Doors



Thermacore® Sectional Doors



Rolling & Side Folding Security Grilles & Closures



Rolling Service Doors

Today, Overhead Door Corporation — as well as its divisions, which include W.B. McGuire Co. for loading dock equipment and impact traffic doors, and Horton Automatics for automated pedestrian entrances — is recognized as the leading, single-source manufacturer of integrated door and operator systems for commercial, industrial and residential applications. With multiple manufacturing locations throughout the United States, a state-of-the-art International Technical Center for design and engineering, and a national network of authorized Ribbon distributors, our capabilities are leading-edge and our field service and technical support second to none. Built best and backed best, Overhead Door is the industry's leading choice for quality that shows and lasts.

**To talk with the Overhead Door Distributor nearest you, call 1-800-887-DOOR.**

### Overhead Door Corporation

2501 S. State Hwy. 121

Lewisville, Texas 75067

(800) 275-3290 Telephone

(972) 233-0367 Facsimile

[www.OverheadDoor.com](http://www.OverheadDoor.com)

©2006 Overhead Door Corporation

C900-069 500 02/06 JAR



INDUSTRY LEADING  
COMMERCIAL & INDUSTRIAL SOLUTIONS

The Overhead Door Corporation family of quality commercial and industrial products includes:



A part of Sanwa Shutter Corporation

Consistent with our policy of continuing product improvement, we reserve the right to change product specifications without notice or obligation